



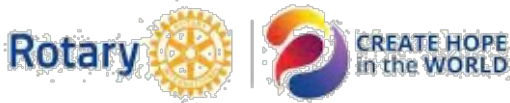
Mark Merriam



“Making a Difference in Hawai’i”



Marie Abatayo



"One restored or newly created hope at a time."  
RI President Gordon R. McNally

The strength of our Club lies in its members

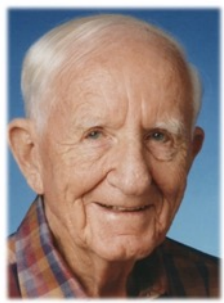
**2023 Give Aloha Program!**  
Service Above Self – Making a Difference



**Give Aloha, Foodland's Annual Community Matching Gifts Program**

Give Aloha, Foodland's Annual Community Matching Gifts Program, was created in 1999 to honor Foodland's founder, Maurice J. "Sully" Sullivan, and continue his legacy of giving back to the community. Each year, during Sept. 1 – 30 at all Foodland and Sack N Save stores statewide, customers are encouraged to donate at the checkout to their favorite Hawaii non-profit organization. This year, Foodland and the Western Union Foundation will match each donation, from customers, with more than \$250,000 for all organizations combined. Since the program began in 1999, a grand total of more than \$38 million has been raised for Hawaii's charities.

Hawaii Rotary Youth Foundation (HRYF) is participating in this year's Give Aloha, Foodland's Annual Community Matching Gifts Program.



Maurice J. "Sully" Sullivan

HRYF was founded by Mr. Sullivan during his year as Rotary's District Governor in Hawaii, 1976-77. It was Sully's desire to assist Hawaii's high school graduates



realize their potential by attending a college or university, of their choice, here in Hawaii or on the mainland United States. This coming year, HRYF will award \$275,000 (2 \$10,000 and 51 \$5,000) scholarships to students of all participating Rotary Clubs in District 5000.

Throughout his lifetime, Sully gave generously to many causes and encouraged the spirit of giving in others. It is in his honor that we present Give Aloha, Foodland's Annual Community Matching Gifts Program.

Sully Spent His Life Giving to the Community. His Legacy Continues!

Our deepest Mahalo's go out to Sully and his family!



From September 1-30, customers are invited to make donations up to \$249 (per organization, per person) to participating Hawaii non-profit organizations at checkout. Individuals must use their own Maika'i card to donate. Foodland and the Western Union Foundation will match a portion of each donation made with a Maika'i card. Donations made without a Maika'i card will not be matched. If you do not have a Maika'i account, may establish one at checkout.



Only one Maika'i account number is allowed per person.

Donations in the form of cash, check or credit card (VISA, MasterCard, American Express, Discover and JCB) will be accepted. Donations must be made payable to Foodland, Sack N Save or Foodland Farms.

The Western Union Foundation has generously donated \$50,000 to add to Foodland's gift of \$250,000 to Hawaii non-profit organizations participating in Give Aloha this year. Therefore, the total gift that will be given to all participating organizations combined is \$300,000!

### How to Donate

- At checkout, present your Maika'i card (or give your 10-digit number) and inform the cashier that you would like to donate to **Hawaii Rotary Youth Foundation (77199)**. If you do not have a Maika'i account, you may establish one by telling the cashier you would like to do so; you will need to give a unique 10-digit number (such as your phone number).
- Tell the cashier our organization's 5-digit code: **77199**.
- You may donate up to \$249 per organization over the course of several store visits. You may make donations to more than one organization.
- Tell the cashier how much you would like to donate. Your donation will be added to your grocery purchase total. You may donate up to \$249 per organization (any amount in excess of \$249 per organization will not be matched).
- Be sure the cashier reaffirms our organization's name and amount that you are donating.
- Any donation must be made payable to Foodland, Sack N Save or Foodland Farms.
- The name of our organization and the amount you donate will appear on your receipt. **Please ask cashier for a duplicate receipt.**
- Donor names will not be released to our organization. **Give your duplicate receipt to your HRYF club coordinator so he can mail it to HRYF**

**office for credit to your individual account. Acknowledgement of your gift will be mailed for tax purposes. This is good way to meet our per capita goal, so we can continue to award \$5,000 scholarships**

### Are These Donations Tax Deductible?

Give Aloha donations are tax deductible to the full extent of the law.

### How Will My Donations Be Matched?

Every year, the matching gift percentage varies and cannot be pre-determined. For the past 5 years, the matching percentage has been between 20%-25%. Thus, if a customer donated \$100 to an organization, Foodland and the Western Union Foundation's matching gift was \$20-\$25. The actual matching gifts will be calculated at the end of the program. Organizations will receive 100% of all customer donations given to their organization, plus their % of Foodland and the Western Union Foundation's \$300,000 matching gift.

Your gift will be matched so that a \$20 donation becomes approximately \$24, a \$40 gift would increase to around \$48. The match comes from Foodland and Western Union (up to at least \$250,000). Based on past years, the matches have provided at least an additional 20%!

<https://www.youtube.com/watch?v=Hh43EimkAEI&t=3s>

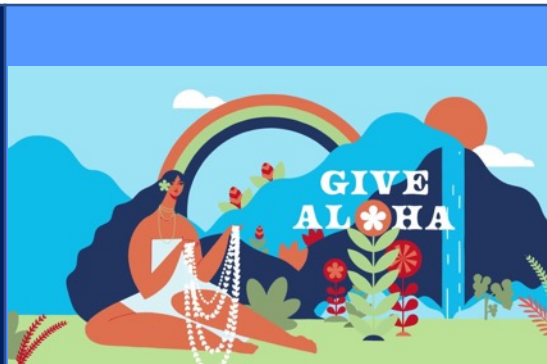
**When will our organization receive our donations and matching gift?** All checks are disbursed by October 31, 2023.

Our Club provides HRYF Scholarships to high schools in the Wahiawa-Waialua-North Shore areas.

Club members are encouraged to participate in this worthwhile program.

Friends of our Club are more than welcome to participate. If you do and have receipts, you can drop the off at each at meeting or e-mail them to [gjhorvath0@gmail.com](mailto:gjhorvath0@gmail.com).

RI President: Gordon R. McNally  
District: Mark Merriam  
Asst. Dist. Govt: Joshua Laguna  
Club President: Mari Abatayo  
IPP: Marie Abatayo  
President Elect: Open  
Secretary: Mark Anthony Clemente  
Treasurer: Cross Crabbe  
Club Trainer: PP Doc Bill McKenzie & Marie Abatayo  
Program/Speakers :  
PP Doc Bill McKenzie & PP Geoff Horvath  
Membership:  
Foundation: PP Doc Bill McKenzie, Chris Compisano



Club Service: Marie Abatayo  
Community Service: Derek Conselva, Pat Compisano  
Intl Service: PP Doc Bill McKenzie  
Youth Services: PP Geoff Horvath  
Vocational Service: Derek Conselva - PP Geoff Horvath  
Public Relations: Rene Mansho  
Sergeant at Arms: PP Geoff Horvath  
Fundraising: Marie Abatayo  
PP Doc Bill McKenzie,  
PP Geoff Horvath  
HRYP: PP Geoff Horvath  
Social Media: Arthur Hughes  
Newsletter: PP Geoff Horvath

Rotary – 118 Years of Service to the World!



For more information:  
email [givealoha@foodland.com](mailto:givealoha@foodland.com)

Thanks to all in advance!

club**business**  
Our new meeting places!



Pledge



Chris Compisano



Derek Conselva



None

Within D5K

None



None



ROTARY MINUTE

PP Dr. McKenzie Reported that the new Rotary International President is Gordon McNally, major emphasis is on mental health. After the pandemic, many mental health issues came to fruition. Caring is important in everything we do. Mac shared an

anecdote about being a doctor in Wahiawa. Mac also shared that there is a lack of mental health services available to people in Hawaii. Mac read President McNally's message from the Rotary magazine regarding mental health – "everything we do is in the spirit of caring, giving, and in the spirit of compassion." There are 1.4 million Rotarians, and what makes Rotary powerful, we create a safe space for members to bring their authentic selves. Loneliness is a public health epidemic. We must prioritize building social connections the way we prioritize other health issues. Performing acts of kindness helps make people feel more connected to one another. "Together, we will create hope in the world."



### The Rotary Foundation – Individual Recognition Part III

Your generous contributions to The Rotary Foundation are essential to securing and growing Rotary programs throughout the world. We recognize donors to express our gratitude for your commitment, offering individual and club recognition as well as naming opportunities that enable you to honor a friend or family member with a named or endowed gift.

#### Major Donor

When your cumulative donations reach \$10,000. Major Donors can choose to receive a crystal recognition piece and a Major Donor lapel pin or pendant. NOTE: Name recognition is not automatic and needs to be reported to [RI staff](#). Recognition items commemorate giving at these levels:

- Level 1: \$10,000 to \$24,999
- Level 2: \$25,000 to \$49,999
- Level 3: \$50,000 to \$99,999
- Level 4: \$100,000 to \$249,999

#### Arch Klumph Society



Art Klumph

When your cumulative donations reach \$250,000. Recognition includes an induction ceremony and your

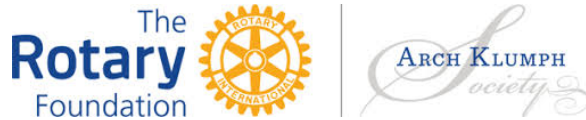
Rotary – 118 Years of Service to the World!





picture and biography in the Arch Klumph Society interactive gallery at the Rotary International headquarters in Evanston, Illinois, USA. You also receive invitations to society events, along with membership pins and crystals that commemorate giving at the following levels. Learn more about the [Arch Klumph Society](#).

- Trustees Circle: \$250,000 to \$499,999
- Chair's Circle: \$500,000 to \$999,999
- Foundation Circle: \$1,000,000 to \$2,499,999
- Platinum Trustees Circle: \$2,500,000 to \$4,999,999
- Platinum Chair's Circle: \$5,000,000 to \$9,999,999
- Platinum Foundation Circle: \$10,000,000 and above.



## Hawaii Rotary Youth Foundation (HRYF)

Give Aloha is coming to a Foodland, Foodland Farms, and Sack 'N Save near you!!

### RECOGNITIONS

Recognitions for August 6<sup>th</sup> to August 20<sup>th</sup>, 2023



None

### Spouses'



None

### Anniversaries



None

Rotary – 118 Years of Service to the World!



## Induction

**President Marie Abatayo** joined our Club 7 years ago, on July 28, 2016

**Steve Comes** joined our Club 10 years ago, on August 13, 2013



**PP Doc McKenzie** Mac celebrated the pizza and shared gratitude that we are here and not engulfed in flames from the Wahiawa wildfire.

**Derek Conselva** gave a HI \$5, celebrating **Chris Compisano's** hospitality here at **Ho'ala School** for Rotary Club to meet.

**Chris Compisano** gave a HI \$5, celebrating the start of school this past Tuesday and was gratitude with his dedicated staff. Chris is also celebrating his 27<sup>th</sup> anniversary on August 24<sup>th</sup>.

**President Marie Abatayo** gave a HI \$5, celebrating seeing her orthopedic specialist and improvements in her condition.



None

## WORDS OF WISDOM

*"Rotary will not go backward nor can it remain stationary. It must push forward!"*

Art Klumph



Art Klumph

**Archibald Klumph (Arch or Art)** (6 June 1869-3 June 1951), was a successful businessman, musician, and pioneer in the Rotary Club movement, Klumph contributed to the economic and cultural life of the city. Arch was born in Conneautville, Pennsylvania, the son of Mortimer and Emma Cooper Klumph. Coming to Cleveland as a youth, he went to work for a small lumber company as a boy of 14. The company was the

nucleus of the Cuyahoga Lumber Co. at 1848 Carter Rd. where Klumph served as president beginning in 1898; he became sole owner of the firm in 1912. Klumph organized the Security Savings & Loan Co. in 1916 and served as president for 35 years.



None

## Announcements and Upcoming Events

Beginning August 1<sup>st</sup>, we will no longer be meeting at the **Mango Street Grill**. We will be meeting in the conference room of **Ho'ala School**, located on the **Wahiawa Hongwanji Mission**. The meeting will be at our regular time. Some food will be provided. Consider random potlucks and/or BYOF (Bring Your Own Food)!



### The Hawaii Bicycling League (HBL) Needs Volunteers

HBL is looking for bicker and non-bickers to volunteer for this huge, exciting event. If interested go to: <https://volunteersignup.org/438FA> and register as a volunteer.

The 2023 Honolulu Century Ride is the 40th anniversary! Join us for a fun day of riding and select your own distance between 25 and 100 miles. We have aid stations along the route and HPD special duty at select intersections. All funds raised support Hawaii Bicycling League's advocacy and education work to get more people bicycling and make Hawaii's roads safer for everyone, whether driving, riding or walking. That's why we say it's the best day of the year to ride aloha!



**Sep 9 – Walk with Us to Prevent Suicide.** Registration starting at 8 am, Program and walk starts at 9 am. Location is at Skygate at Frank Fasi Civic center Park, 650 S King St, Honolulu. We will be partnering with **RC of Mililani Sunrise**.

**October 14 – s Ho'ala Craft Day.** The **RC of Wahiawa-Waialua** will be selling **Bento boxes** for \$10,00, as a fund raiser. Come out, enjoy the fair and terrific bentos!



Let's walk alongside of **RC Mililani Sunrise Club** in the upcoming "Walk with Us to Prevent Suicide!" This walk is part of the **Out of the Darkness** program.

The Community Walks, held in hundreds of cities across the country, are the core of the **Out of the Darkness** movement, which began in 2004. These events give people the courage to open up about their own connections to the cause, and a platform to create a culture that's smarter about mental health. Friends, family members, neighbors and coworkers walk side-by-side, supporting each other and in memory of those we've lost.



**September 7 – Chris Bailey – Project Manager at Leeward Community College, Wahiawa Value-Added Product Development Center – Topic: Value-Add Building in Wahiawa**



*“Rotary is built of men and women made of good stuff, the ideal of service is developing into practice. As a consequence, the organization will never stand still.”*

Art Klumph

**Art Klumph** was one of the founders of the Rotary Club of Cleveland in December 1910 and was elected president of Rotary International in 1916. He conceived the idea of a Rotary Club Foundation and convinced Rotarians to begin an endowment during **WORLD WAR I**.

Rotary – 118 Years of Service to the World!





Art Klumph

## Correspondence

### Received from Chris Compisano

Aloha Fellow Rotarians,

On behalf of the Ho'ala students, parents, and faculty, thank you for purchasing morning refreshments and lunch this past Saturday (and this coming Saturday too) for work day at the school. Your kind generosity is deeply appreciated and will help benefit the educational experience of our students. Mahalo

Chris & the Ho'ala 'Ohana.



Darlene Dela Cruz, Chris Compisano, and President Marie Abatavo

Received from Fran Wargolet of RC Kenosha West (Fran was a frequent visitor at our Club, while her daughter was stationed at Scofield.)



Hi Geoff, I do enjoy your newsletters and often share ideas with my Club.

I recently participated in a fundraiser for **Shelter Box** hiking in Yosemite with my daughter (22-year Army vet who was serving on Oahu when I attended meetings with your Club) and my granddaughter. We three raised almost \$16,000.

Shelter Box donated \$50,000 in conjunction with **District 5000** in support of **Maui Fire Relief**.

A picture of we three at the top of North Dome is in this link.

Feel free to share if you like.

Fran



Shelter Boxes



Fran Wargolet with daughter and granddaughter on the top of Dome Rock National Monument, located in the Sequoia National Forest in California



Fran Wargolet with daughter and granddaughter ready for a hike!

Rotary – 118 Years of Service to the World!





**Received from Club Secretary, Mrs. Hiroshi Nishino,**  
from our **Sister Club, the RC of Takasaki Symphony**

Dear Mr Horvath

I belong to Takasaki Symphony Rotary Club. All members are concerned about people in Maui. If there is anything we can do for them or for you, please give us information.

We wish we can meet you again in the near future.

Hiroshi Nishino

iPad から送信

**Response** to information provided to **Mrs. Nishino**

Kon-nichi-wa, Joeff-san!

We also greatly appreciate you if we can help Maui people!

I will forward your letter to our president Onogaki, to start donating.

Sincerely

Hiroshi

**Received from PP Keoni Ahlo**

Aloha Rotarians,

We held a donation drive at our building at 834 Kilani Ave in Wahiawa today, and there was a HUGE turnout— collections will continue tomorrow morning at 9 AM until noon. We had one container truck full of stuff within 3 hours today and we will have two more hauls tomorrow. The old liquor store that I am renovating is completely full with donations, and we will need to load them into trucks tomorrow. If anybody's interested in helping move items from the room into the shipping truck, we will have our first load at 8:45 AM tomorrow morning (Friday).

Let's all say a prayer for our Maui neighbors as they begin the healing process.

Mahalo,  
Keoni



One of three loads (40' container) of relief goods bound for Maui



What never asks a question but gets answered all the time?



**Club Business**

## Meeting Discussions

### MEMBERSHIP DUES STATEMENTS SENT VIA EMAIL

These were also physically passed out at the meeting. Derek paid his dues (\$150.00) to Cross via Venmo. Derek asked that monthly statements of expenditures and income be presented at our meetings.

### REVISIT FUNDRAISING AND PROJECTS LISTS ADDITIONS

Hawaiian Plate Fundraiser for WEDG serving plate lunches at the Hoala Fair and is offering Rotary, Lions, and Laca the following fundraiser:

Hawaiian Plate Sale: imu kalua pork, chicken long rice, lomi salmon w/ fresh salmon pieces, rice, pineapple, and haupia.

Tickets, paper goods, napkins, and utensils included.

Presale plates for \$10 through 10/1; final count due 10/2. We pay \$5 and our profit is \$5. Minimum 30 tickets to be sold. Payment due 10/13.

If the Club is interested, the tickets can be prepared for the Club and have them ready by 9/14. Tickets can be ready sooner if need more than two weeks of selling time. Pick-up will be from 10am-1pm.

Motion to do this fundraiser: Mac; seconded by Chris. Unanimous vote.

### FUTURE SPEAKERS

**Chris Bailey** will be speaking at our next meeting on September 7<sup>th</sup> to discuss the Value-Add Building in Wahiawa.

### KATHY LUM, MSRC PRESIDENT WOULD LIKE US TO JOIN THEM IN THE WALK.

If you want to learn more about the walk, please contact Marie. Kathy Lum would like us to join us or create our own team for the **Out of the Darkness Community Walk Oahu**. The Walk is scheduled for **Saturday, September 9<sup>th</sup>**.

Motion to support this walk: Mac; seconded by: Chris.



**FUTURE PROJECTS & PROGRAMS**

There was discussion about having a mental health professional be present at the October 14<sup>th</sup> Ho'ala Craft Fair.

**New Proposed Club Shirts**

The below pictures are the proposed new Club T-shirts. Please let President Marie know if you agree with the shirt design.



**Meeting Schedule Update**

We meet on the 1st and 3rd Thursday of each Month. For those months that have 5 Thursdays, then can be used for Board meetings if required.

Beginning on August 3<sup>rd</sup> and after, we will be meeting at the Ho'ala School Conference room on the Wahaiawa Hongwanji Mission.

Meetings are In-person and are subject to change.

- Aug 31 – 6:00-7:00 pm – 5<sup>th</sup> Thursday – No Meeting
- Sep 7 – 6:00-7:00 pm – Ho'ala School
- Sep 21 – 6:00-7:00 pm – Ho'ala School
- Oct 5 – 6:00 – 7:00 pm – Ho'ala School
- Oct 19 – 6:00 – 7:00 pm – Ho'ala School
- Nov 2 – 6:00 – 7:00 pm – Ho'ala School
- Nov 16 – 6:00 – 7:00 pm – Ho'ala School
- Nov 23 – Thanksgiving – No meeting (DARK)
- Nov 30 – 5<sup>th</sup> Thursday – Meeting to be determined
- Dec 7 – 6:00 – 7:00 pm – Ho'ala School – Pearl Harbor Day
- Dec 21 – 6:00 – 7:00 pm – Ho'ala School

**2024**

- Jan 4 – 6:00 – 7:00 pm – Ho'ala School
  - Jan 18 – 6:00 – 7:00 pm – Ho'ala School
- Subject to change



Answer to the Quiz of the Week. What never asks a question but gets answered all the time? **Your cell phone! LOL**

**Around the Club in Photos!**

To keep the size of this document down, I will not publish all pictures. If interested, you can view them all on our Facebook page: <https://www.facebook.com/groups/rotarywahiawawai/>



Fran Wargolet with daughter and granddaughter hiking Dome Rock for Shelter Boxes for Maui



Our new meeting location being enjoyed by President Marie Abatayo (behind the camera), Mark Anthony, PP Doc McKenzie, Chris, and Derek

Rotary – 118 Years of Service to the World!





**WHAT IS ROTARY?**



**JOIN LEADERS**


**EXCHANGE IDEAS**

**TAKE ACTION**


IN COMMUNITIES LIKE OURS, AROUND THE WORLD

Rotary Club of Mt. 

**OBJECT OF ROTARY**



- 1<sup>st</sup>** THE DEVELOPMENT OF ACQUAINTANCE AS AN OPPORTUNITY FOR SERVICE;
- 2<sup>nd</sup>** HIGH ETHICAL STANDARDS, INTEGRITY, AND HONORABLE CONDUCT; AND THE ENLIGHTENING OF COMMUNITIES TO SUCH STANDARDS;
- 3<sup>rd</sup>** THE APPLICATION OF THE IDEAL OF SERVICE IN EACH ROTARIAN'S PERSONAL, BUSINESS, AND COMMUNITY LIFE;
- 4<sup>th</sup>** THE ADVANCEMENT OF INTERNATIONAL UNDERSTANDING, GOODWILL, AND PEACE THROUGH A SPIRIT OF FREEDOM AFFECTION IN THE SERVICE OF SERVICE.

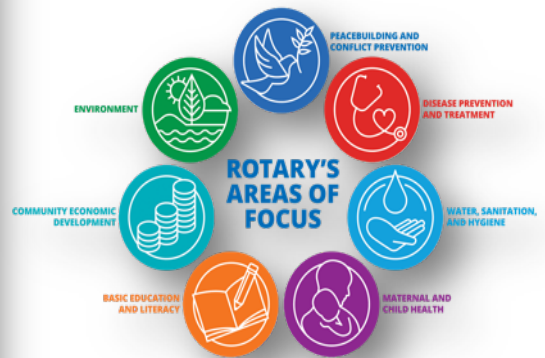
Rotary Club Of Olathe 

**THE FOUR WAY TEST**



- FIRST** IS IT THE TRUTH? TO ALL CONCERNED?
- SECOND** IS IT FAIR TO ALL CONCERNED?
- THIRD** WILL IT BUILD GOODWILL & BETTER FRIENDSHIPS?
- FOURTH** WILL IT BE BENEFICIAL TO ALL CONCERNED?

Rotary 



Rotary – 118 Years of Service to the World!

